

#2211 ALBERS, Ralph H. W4ER. ExW8CXL W2UP, W9OEE  
Born 11-14-22 First on air 1940. Went to sea  
from 1942 to 1946, Chief engineer AM WBEX  
1947-50. WBKY 1954-59, Police radio FM Mobile  
Louisville KY 1946-47 Presently employed by  
General Electric Co as major account manager



#2212 ROOF, Glenn W4KO exW80PG, K40BM. Born 6-6-18  
first on air 1935. Served as Captain in the  
US Army 1940-45. Has operated only CW for DX  
Has never bought commercial gear, always built  
his own. Active on 10-15-20 & 40 CW

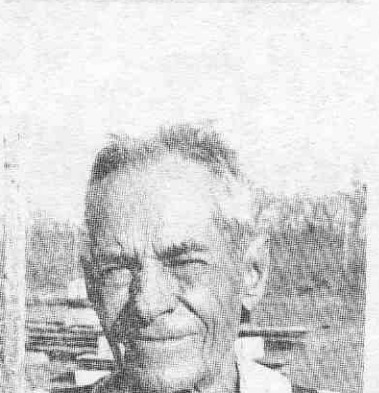


#2213 LEWIS, Le Roy W7CBA exW3HQV, W4SFL, K6EJA  
Born 8-1-20, first on air 1939. Operates  
10-40 CW only plus 2 mtr phone. Enjoys DX  
but primarily rag chewing. Employed as comb-  
ination Electronic and mechanical Tech



#2214 STEPHENS, Gene M. KA6HQ, ex W6JRW. Born  
6-29-17, first on air 1930. Served US Navy  
1942-46 Chief Warrant Officer. Employed by  
Monolith Portland Cement Co., as credit  
Manager since 1952. Member: US Naval Reserve  
Ass'n, Retired Officers Ass'n, QCWA, OOTC,  
Member Long Beach Yacht Club and Seven Seas  
Crusing Ass'n.

#2215 GOULD, Roy C. N6GM, x6DHQ, 6DRB, W9AXQ. Born  
11-7-09 First on air 1927. Member; QCWA.  
SOWP ARRL, OTC,



2216 BROWN, Paul H. W5IQL. Born 10-6-04 First on  
air 1940. Served in the US Navy as ARTIC  
1942-46. Started as a carpenter then in radio  
service, then back to carpenter trade again.  
Retired at age 62 and lives on small acreage  
alone, but health is good and he says thats  
"a-plenty!"