



#2106 REINER, Frank M. W4JVR, exW2CWX. Born 2-16-16 First on air 1932. Born in Pennsylvania but moved to Brooklyn in 1926. As W2CWX operated on 160 meters. First phone rig was a loop modulation job. Attended radio school at US Navy Noroton Conn., After school served on several attack transports on the Murmansk run. Made Chief Radioman in 1944. Discharged in 1945. Then to the old CAA in radio maintenance. After WWII active in communications, Television fields. After working for a few companies he turned to teaching in high school teaching general electronics.



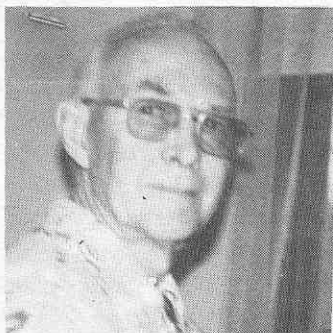
#2107 MOORMAN, Girard J. K7AIL, exW6FZI, W7IKK. Born 10-10-11. First on air 1932. Got his license while attending Central Trade School in Oakland Calif. Started with a Hartley 245 PP to a pair of 210's TPTG. Homemade receiver with 199 peanut tubes and pushpull 201A's. In Alaska he was K7IKK before it became a State. Worked all states with a 6L6 on 7110 and a 67½ foot Hertz antenna. At present on 20m starting 25kc up from lower end with a trapped dipole and a Swan 700CX.



#2108 EHNI, Adolph DL1SX exEK4AEY, DA510. Born 10-29-11. First on air 1925. As a member of Funkverein Braunschweig DFTV.



#2109 SAMUELS, Ruel P. 6Y5RS. Born 9-3-08, first on air 1937. 1930 he completed a home course from RCA Institute. Then service work on home and marine jobs, to 1942. Went to sea until 1946. Resumed radio service in 1951. Then became Motorola's overseas distributor. Also for Westrex Corp. Member IEEE, RCA QCWA



#2110 MAYERS, Leonard M. W3FVF. Born 8-24-06, first on 1921. ex3BMA, W2BFD. During WWII was a Sgt in the Signal Corps 1942-45. Started with home brew spark set in 1920. Worked for NY Shipbuilding Corp in 1934, then 1942 in the Signal Corps. Then back to NY Shipbuilding Corp. as a design draftsman.