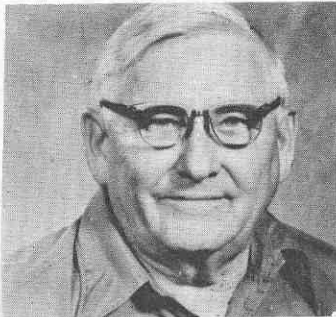




#2078 HALE, Maurice W. W1GMA exW5HDL,0A4DA. First on air 1915 Born 3-3-02. Retired from the US Army as Colonel after 39 years of service. First operator station owned by Fred Snell in 1915. Started in the USMC in 1917. Got a commission in the Army in 1928 and retired in 1956. Professor Univ. of Georgia 1956 1960. Presently serving as director of Civil Defense and Health Officer town of Dublin NH



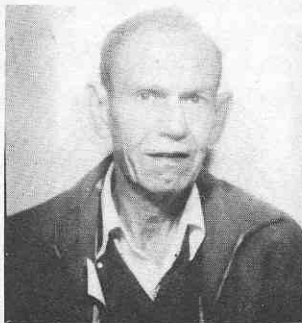
#2079 CERWIN, Steven S. K6OJO, exW9QHS,W4ITY,W2FOA,OE13AA First on air 1937. Born 1-13-06. Served in the US Army from 1931 to 1961 retiring as a Colonel.



#2080 SKEELS, Carroll B. W8TBP First on air 1932 Born 1-19-07 His father W R Skeels was a telegraph opr for Postal Tel., at the turn of the century. His sign was WR. He was transferred to Chicago as wire chief. Carroll's love of CW must have been inherited.



#2081 LEVINE, David B. WB4ESH exW2DCI W3IWU. First on air 1931 Born 5-6-10. Went to sea from 1944 to 1946, on Liberty ships. and on tankers. This was during WWII



#2082 MOMMERTZ, William C. WØRLS. First on air 1934. Born 7-19-10 He was 16 years old when he got his first license in 1934 and the class A ticket. Now has Advanced. Served in the Navy in WWII as a radio tech on a Destroyer. Worked for ARMCO Steel in Kansas City until 1947. Retired because he said there was a lot better things to do than working. At present he is playing with a KIM-1 microprosser and enjoying it very much.

#2083 SPRAGUE, Zane E. LtCol USMC Ret. K6WK. Also KH6AWJ. First on air 1938. Born 12-6-20. Member of: IEEE, SOLE, QJWA,ANA ARRL. Currently fleet calibration program Manager for Commander Naval Air Force US Pacific Fleet San Diego.