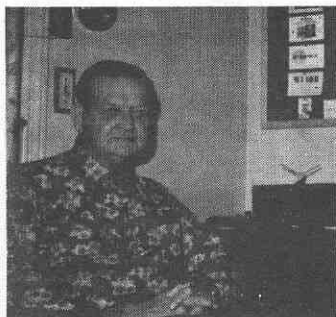




#1921 CLARKE, John M. W6VBI. Born 2-21-10. First on air 1934. Moved to California in 1940 Los Angeles up to 1950. Then moved to Sacramento to work for IBM as a customer engineer for 30½ years then retired 1971. Radio is his only hobby and spends his time listening and working DX Works all bands.



#1922 LEE, George R. W6EZ exDL6LG. Born 6-27-96. First on air 1908. Started in ham radio with his brother 6V0. Went to work for his uncle Axelson Machine shop 1912. Then to Macomber Rotary Engine Co. then to first National Bank of L.A. in charge of all locks and vaults and burglar alarms of 108 branches. Went into the Navy. Discharged at end of war. Worked for Parkhill-Wade as construction superintendent in the oil fields. Moved to San Diego and was hired by NEL and sent to Alaska to study ice conditions in the North Sea 1950. Returned to San Diego and went to work for General Dynamics on Atlas missiles. Retired 1964



#1923 SCHALTENBRAND, Alfred L. W1IC0 Born 6-3-10 First on air 1934. Built many receivers at an early age. Got his license in 1933 and advanced license in 1942. Graduate of Lowell Tech 1933. Worked for US Army Signal Corps as civilian Senior Radio Tech 1942-45. 39 years employment with Dennison Mfg.Co., in management and chemical research. now retired.



#1924 DELCAMBRE, James M. W5GMO Born 7-10-11 First on air 1935. Retired from Int'l Salt Co., Avery Island, LA where he served as purchasing agent. Active in Boy Scout Movements as Scout, Scoutmaster and district commissioner. Past Grand Knight of Council 3425 New Iberia, LA. Member New Iberia Rotary for 12 yrs. Did not serve on active duty during WW2 because he was a Junior executive in the Mining Industry, a Defense Industry.



#1925 SMITH, Ethel, M. K4LMB, exW3MSU, W7FWB, Born 2-13-17. First on air 1936. Founder and First president of YLRL. Editor Auto Call 1971-75. Executive Secretary QCWA 1974-1981. A. D. ARRL 1963-1975 SEC-VA 1966.1970