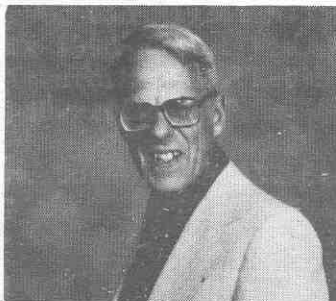




#1881 SNEDEKER, J. Russ W2EEQ. exW3EEQ. Born 7-11-15 First on air 1933. Built first receiver 1925. Licensed in 1933 when NJ was split between 2nd and 3rd districts. Tech Rep for IBM to Manila, Philippines 1944-45. Attached to Press Wireless and Signals Corps. Loaned to Globe Wireless 1946. Retired IBM 1972 after 30 years. Active 80 thru 10 and 2 meters. He has built all of his equipment.

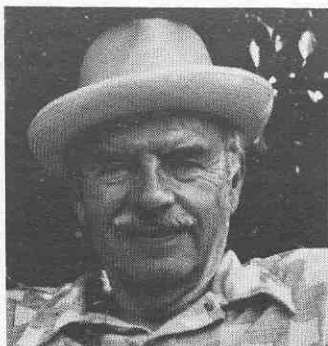
#1882 REED, Howard C. W8HSP Born 1908. First on air 1931. Started in 1921 building receivers and experiments Spent 8 yrs in service business from 1933-41 Then worked for the War Dept., servicing 2 way equipment till 1948. Then went into the specialty sales and advertising and management Retired in 1972



#1883 McCLENON, Donald W3IN. exW3EIS, HC1AGI, HC1DC. Born 5-19-17. First on air 1939. Began with PP 45 TNT Osc. 133 foot Zepp and two tube regenerative receiver. 5 meter DXing and 2½ and 1¼ meter experimenting WERS Operation during WWII. BSEE in 1939. Communication engineering at Naval Research Lab 22 yrs. NASA Satellite Tracking station Director, Quito Ecuador 2 yrs. Navy transmitter procurement and VLF system engineering 4 yrs. Active in gardening, church work. Member ARRL (Life) Potomac Valley Radio Club. Registered professional engineer.



#1884 SIMPSON, Carter L. W5CEZ Born 3-27-01. First on air 1932 In 1924 received his BS degree from Grand Island College. Received MS degree from Univ. of Nebraska in 1926. Employed by Empire Oil and Refining co., in various capacities and locations for 40 yrs. Retired in 1966. Joined the AARS/MARS program and ARRL. Also was in Naval Communication Reserve. Served 2 terms SCM and Asst. Director for four ARRL directors in 2 divisions. Active in Church and civic affairs, Boy Scouts of America 38 years and still active and a recipient of the Silver Beaver Award.



#1885 SCHLOSSHAUER, Alfred R. HB9AWV. exD40SA, D4BJC, etc. Born 3-24-11. First on air 1931. Retired in 1972 after 36 yrs of engineering work. He is devoted to gardening and other necessary chores around the house.