



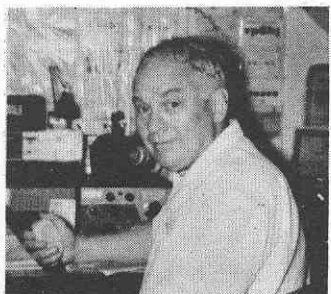
#1822 PEAK, Ellsworth H. W1BWN, exW1UQ. Born 2-14-06, first on air 1921. First rig Ford spark cil and homebrew helixes. Flat top antenna. He runs strictly CW Raised Collies for 10 years, Still active on CW 40 and having a ball running QRP. Times have changed a lot still not us old timers.



#1823 SHAWSMITH, Alan VK4SA, First on air 1935. Served in WWII 1939-42. Started with 3 tube TRF receiver and MOPA crystal controlled 25 W Besides being a Dxer for 40 years a large part of his time has been devoted A.R. Journalism. Many stories and articles published in magazines. Also has held one or more executive positions continuously for many years. Retired and now a collector of early radio gear. MEMBER SOWP, ISSBers XL IARJS, AWA RSGB Has many awards from Contests.



#1824 GOODSSELL, Adolph S. W1ICQ/WA1QZQ. exW1DNN Born 3-20-12. First on air 1932. Served in WWII US army 1943-1946. Got W1DNN in 1932, let it lapse then got WN1QZQ, Got his advance license and got W1ICQ.



#1825 GREENE, David, W2IA0ex K2DHS. Born 10-26-17. First on air 1935 He got his first license on the 30th day of January 1935, so on his 40th anniversary he invited all friends of the ham world to a cocktail party on the 26th of January 1975.



#1826 CLARK, George M. W2JBL. exN2JBL. Born 8-25-17 First on air 1935. Served in the US Navy 1942-1944 discharged as RM2c. Works all bands 2 thru 80 90% CW. He is very active on 7035Kcs QCWA net on Wednesdays. During WWII he was on Bougainville Island, Solomons Married and has 2 daughters. Member QCWA ARRL

#1827 FLEMING, Lloyd V. W2CLI ex W8DSH, W8GQH. Born -313-12. First on air 1928. Operated school station W3BIR until 1932.