



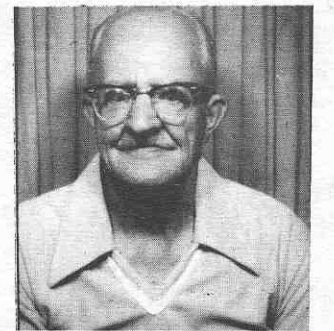
#1774 PRETORIUS, Peter G. ZS2AG. Born 11-27-10 First on air 1920's Served in the army 1928-1933. Got interested in wireless as a boy in 1921. Started with the Ford spark coil etc. Worked in the General Post Office since 1926 to 1970 last 34 years he was Senior Radio License Inspector. Was appointed A.W.I.R.E. May 1938.



#1775 BRAMWELL, Herbert D. G2RF. Born 3-26-15. First on air 1933. Was in the Royal Air Force from 1939-1945. Warrant Officer. He has many friends on the ham bands, among them W1RY, W2FAR, W3OP, W3BQP, W4AH and W2AIW before WWII. He erected radio stations in Europe, Africa and the Caribbean. Retired from government service 1975.



#1776 BABCOCK, Leslie B. W1FAT exW2EGM. Born 1-6-15. First on air 1931. He started with short wave receiver using 201A detector and two 201A's audio. His transmitter was a 245 Hartley Osc., on 80 CW. He has built many rigs using 210's 250's etc. Used many homebrew sets on the bands. Works 2 thru 160 all modes.



#1777 LIGHTCAP Carl B. K7PXI. exW8NSS W7AAW. Born 6-20-14. First on air 1926. experimenting on 2 and 5 meters. Was a Master Sgt in the Air force 1950-59. Out of High school in 1936 went to work design and production electric motors 1936-1950. Duro Co., in charge of set-up and production parts of Gun Sight and electric bomb release for bombers. Moved to Michigan 1950 working as production supervisor small aluminum parts. ARRL co-ordinator for Barry County Mich. 1955-59.

#1778 FELLIS, John W6TLO NO INFORMATION

#1779 WILEMAN, Winfred H. "Winkie" W6AI. exW5FHU W6WGC. Born 7-12-20 First on air 1935. Has all FCC licenses and endorsements. 6 months at sea. Private pilot has been with KFI radio since 1946. Worked maritime mobile around the world XYL is K60QF.