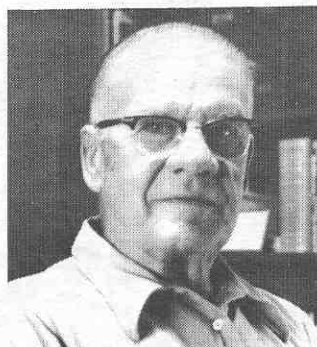


#1632 SAVELL, William E. W2LS. ex3CJJ, W3BFJ, 4KW. Born 9-20-08. First on air 1923. First transmitter Ford Spark Coil 30 mile range First DX on 40 meters running 5 wats Italy iER in 1925. as 4KW. Employed by Western Electric as an installer 1929-32. Employed as photographer 1933-43. Civil Air Patrol 1943-44. Radioman in over-seas service with AT&T 1944-71. Retired after 30 yrs 1971



#1633 OTZEN, Borge OZ8T. First on air 1933. E.D.R. Member 1931. Manager DR Danish receiving Amateurs section 1935. to 1936. Graduate weak current Engineer 1939 from Danish Technical University. President of E.D.R. 1946-48. Editor and co-author of Vejen til sendetilladelsen (The road to the Amateur Transmitting License) 1950. 55 and 60 editions published by E.D.R.. Member ARRL Employed in 1942 in charge of Radio Phone and TV Design laboratory 1947-61. Now Chief Engineer of Technical Secretarial.



#1634 HILER, Kenneth Lt Col USAF Ret. W4SQ. Born 5-18-05. First on air 1919. ex2SQ, W2CJR, W1INK. Started in ham radio at age 12 this lead to a life in the Electronic field. Employed by SpheLorf Electric Co and later with A H.Grebe in 1924. Then to the Broadcast field in 1926. WAHG, WMSG, WPCH, WGL, WMCA WAAT. In the Air force During WWI spent 4 years in Europe. Now retired from General Elc.



#1635 KIRK, Hegel, W6DEG, ex7KA. Born 8-14--95. First on air 1908 Wrote an article printed in Jan 1969 QST "The Good Old Wireless Days" tells how he started in ham radio. In Bakersfield Calif., he operated an X-Ray lab and was Kern County Roentgenologist. He got his commercial license in order to operate KDZK. He built and operated his own BC station KFFR. He then moved to Los Angeles getting W6DEG about 45 years ago. During WWII he was an employee of the Signal Corps, at Stanford Univ. Also at the Presidio to make use of his skills as an electronic draftsman. Enjoys home brewing and rag chewing. Plays the organ at the Unitarian Church of San Mateo.

#1636 TODD, Robert H. W8CN ex W8MOT First on air 1933.

#1737 KNOLL, Edgar W3OP. Born May 25-03 First on air 1928. He is strictly a CW operator. Used phone only during WWII on WERES and 2 meter FM for local rag chews. Retired from Power and Light Co, where he was abuyer of major equipment for many years. Operates 20 meter CW 100%. Member of ARRL: Trustee and Life member of Lehigh Valley Amateur Radio Club.



#1638 SHERMAN, Lloyd W. W3CDY. First on air 1932. A borrowed receiver and a home-brew transmitter using a pair of pushpull 45's in TPTG circuit were used to make his first contact on 80 meter CW. The antenna was an end fed Zepp. The shack, a room in his parents home, heated with a small pot belly stove. The fuel was river coal that could be bought for 25c a bag.