



#1473 SCHULTZ, Carl F. "Bud" W6CG. Born 7-20-09. First license 9CSB in 1925. Was 9CF while attending University of Illinois 1928-32. Then worked for Motorola as test equipment engineer. 1936 was hired by ERPI to the recording dept of the World Broadcasting System. Left ERPI in 1939 to start a recording department at radio station WGN in Chicago. 1944 moved to California and joined the Engineering Dept of the Mutual and Don Lee Networks KHJ in Hollywood. Retired from KHJ in 1967. After WWI was issued the call W6UWQ and 1946 received W6CG. Did considerable work on RTTY from 1953 to 1966 and was DX Editor for RTTY Magazine. Hobbies; model railroading, Stamp Collector & fishing.

#1474 ROYER, E. "Gene" W6EBG NO INFORMATION

#1475 RAGSDALE, William H. W8PQ NO INFORMATION

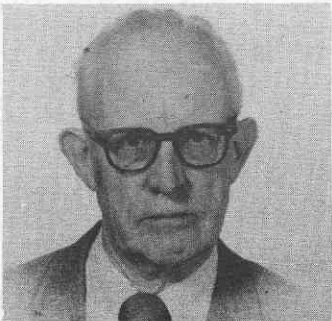


#1476 GLEED, Herbert J. Jr W6FQ. Born 5-24-15. First on air 1931 as W9BHP. exW110N, W6ZPX. Attended Massachusetts Radio School 1934-35. Sailed in merchant ships as operator for United Fruit Co. He was at YNB Bluefields Nicaragua in 1936-37. Sailed with Isthmian Line 1937 thru WWII. Moved to Los Angeles 1945 as W6ZPX. Retired from TRW Defense Systems group June 1977. as W6FQ

#1477 RIDDLE, Lindsey G. W5JG NO INFORMATION



#1478 L'HOMMEDIU, Harry W. WB6PNY. Born 10-18-1897 First on air 1918. Earned his LLB in 1927, passed state bar Ohio 1927. Joined the Navy in 1917 to 1919. He is now retired. A Freemason for over 53 years, and member of many Masonic bodies. Member of the American Legion, BPOE and Cleveland Bar Association.



#1479 PEARCE John M. KB3LD exWA30S0. x9BTA..Born 12-13-06. First on air 1921, as 9BTA. From 1925-42 17 years Engineering Supervisor WGN Chicago. 1942-46 Unit Supervisor complete charge of V.T. Radio Proximity at Johns Hopkins applied physics lab. Other companies with responsibility 1952-57 President and General Manager Philco & Hoover Electronics. Director of marketing communications Div of Bendix retired in 1971



#1480 FLOYD, Arthur W5VGW/W4BEO Born 10-28-11 First on air 1932. Presently employed for the State in Mobile Ala.