



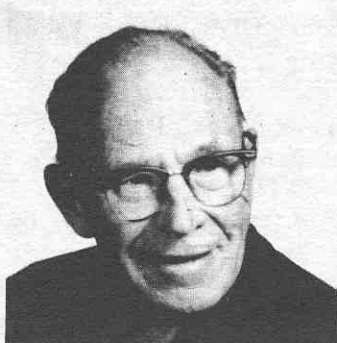
#1391 GIBBS, Leo L. W8BHT. Born 5-23-10. First time on air 1925
x9BSU Interest in radio began in 1922 with crystal set. Built
first Hartley oscillator using raw AC on a 201A. Attended Crane
College late Newark College of Engineering and at Princeton Univ.
Started to work in factories ending up with designing eqmt at
Bremer-Tully Radio, Thordarson Electric, Stewart-Warner,
Buckingham Radio, Silver-Marshall, Metro Electric, Erla, Belmont
Radio, Bendix and Motorola. 1929 obtained first license 9BSU.
1940 gave up work in industry and obtained a civil service
position with USAF at Wright-Patterson AFB. At present still
engineer at Wright field and on the ham bands operating on 10.



#1392 HERRICK, Frank S. W6NYJ. exW1AMT. Born 10-6-06 first on air 1929
Retired from Corps of Engineers in 1974

#1393 ACTON, J. Keith DDS. W5CGC NO INFORMATION

#1394 JEFFERY, Lester A. W8WT NO INFORMATION



#1395 WARNE, Vearn J. W6DUX/7 xW6EMM Born 8-10-07. First time on air
1928. First got on with spark coil and tuning coil. 160 mtrs.
Has been active except for war years. Retired from Micro Switch
Div. of Honeywell in 1972. Went to work part time at Henry Radio
in West LA. Retired from there 1978 as night manager. Now active
all bands



#1396 MORRIS, Glynn I. VK3BZ. First time on air 1930. Born 5-2-08.
Began as SWL in 1922. Started off with 20aA in Hartley Oscil-
lator and battery power. WAC 5 watts. Rx detector and 1 audio
Has operated all bands continuously since 1930. Interest in DX
on all bands SSB and CW with preference for CW. Served in RAAF
during WWII as a signals instructor Retired from Electric Supply.



#1397 DENNY, Wilfred I. W6FGT. First on air 1930. Started with 210 TNT
circuit. ARRL official realy Station early thirties, also Route
manager for LA Section, Made BPL frequently. During WWII was
instructor at Radio Materiel Schools Treasure Island and Navy
Pier Chicago. Now dean of students for Grantham School of
Engineering.