



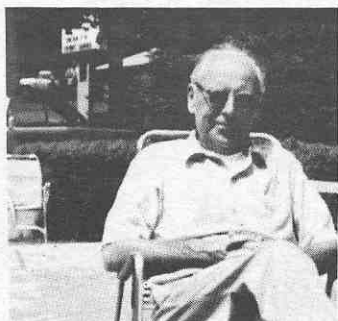
#1383 POMERY, John B. K6UQ. Born 6-8-07 First time on air 1931 as W9DQL on Iowa farm. Naval Reserve 1934 Ret 1956. WWII 1940-1944 then duty at Bremerton, NY was W6YRP traded it for K6UQ

#1384 STEWART, Bruce E. W1PA NO INFORMATION



#1385 SHEA, Robert L. W1HV xW1CSY, W1AFM. First time on air 1931. Served in the US Navy 1939-1941. Professional Muscian now retired Born 1917. First license W1CSY USNCR 1939-1941 worked Radar/HF transmitter rproduction at General Electric, 1942-44. Returned to New Have after years of traveling, playing aboard cruise ships . Relicensed as W1AFM 1963. Learned landline morse from grandfather in 1920's. Mostly operates CW on low end of 80. Charter Life member ARRL. Life member QCWA Also A-1 opr, OTC, WAS, WAC DXCC CP-35 and RCC

#1386 BAIRD, Merton N. W9GZV. Born 7-1-04. First on air 1918 Got his license in 1931. Has an EE Degree from Purdue 1933. With General Electric Co. Retired in 1969. Still active on the bands.



#1387 BUTTERWORTH, Walter. W1BI. exK4VH. First time on air 1919. Joined the Massachusetts National Guard and saw on the Mexican border in 1916. Assistant Radio Inspector Radio Div., 1918. Served at Norfolk and Washington. Returned to Boston 1920. Engr in charge New England Div. FCC 1945 and retired 1951.

#1388 MATHEWS, F. Robert. W8CJG. Born 3-24-03. First on air 1930. Started interest in radio 1916. Usual spark equipment.



#1389 HARVEY, Lloyd D. W0QGI Born 1-19-12 First time on air 1930. xW9FQC. Started at age 11 and built first radio. Had radio Club in old coal house used water tower 150 ft wife on 160 mtrs. Cut his own crystals and ground from quartz Printed QSL cards on old printer. DX is his hobby using never over 100 watts. His wife helps run a repair shop.

#1390 OSCHÉ, Ralph A. W2SGM ex3AFV, W8DNX First on air 1925.