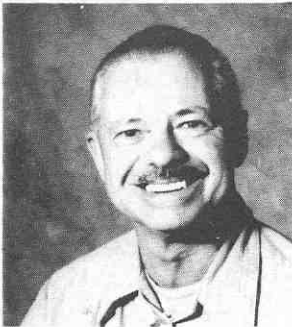
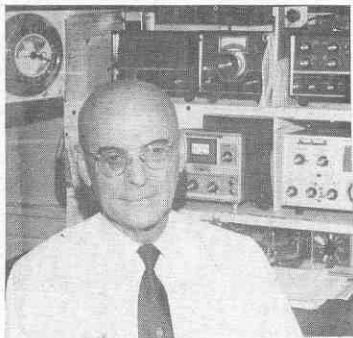




#1353 FABER, Leon A. W7EH. Born 2/2/00 First on air 1917. Started building in 1913 with early crystal detector. First licensed as 9EH Has been on the air since 1913 except when bands were closed due to war. He served in the Navy WWI as shipboard operator 1919. Retired in Phoenix AZ



#1355 PERRY, Wayne E. LtCol Ret. W5YK. First on air 1930 Other calls W6BB, K6DMI, K6TX Attended Univeristy of Berkely 1932-33 Served as Chemistry and Electronics instructor Pinole Valley High School. He has 35th year background in teaching.



#1356 GREENE, Harold L. W1K0 born 6/30/03. First on air 1921. Served as Radar instructor during WWII Retired 1964

#1357 BROWN, Robert P. N60B xWA6ZKI. First on air with Signal Corp 1921. Built his own equipment while stationed at Camp Kearny First job Third opr on USS Chateau Thierry. He has sailed in freighters, tankers, passenger ships, tug's and yachts also container ship before retiring.



#1358 ESTES, Ellery E. W1AY First on air 1922 . Commercial opr 1929-30. In 1937 he was radio instructor USLHS Labs. Senior Radio Electrician USLHS Portland ME 139-42. Then various positions with the CAA in New York and Washington. Retired in 1964 from Deputy Communications Liason Officer, Dept of Commerce.

#1359 JOHNSON, Henry C. W8AMZ. NO INFORMATION



#1360 KRAMER, Leonard J. W9HPP First on air 1931. He was with Wester Union Tel Co Jan 1923 to Aug 1967 as operator, wire chief an Supervisor. Now retired. Member of Morse Club Chicago Chapter Operates all ham bands both CW and SSB on15 and 20.