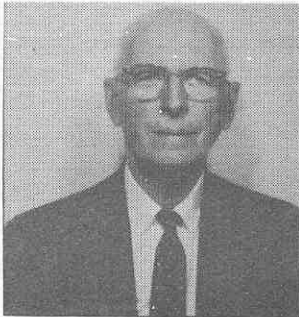




#1142 BERMAN, Jack W1BGW xW1EVT, first contact 1929,  
Born 1913. Built first crystal sets and spark trans-  
mitters, First job went to sea, then radio serviceman  
and later radio-TV serviceman. Worked for Raytheon and  
Northrup. Broadcasting at WHDH until retirement. Operates  
mostly CW but also some SSB and RTTY plus slo-scan TV  
Member ARRL, QCWA.



#1143 DOUCETTE, Myron E. W2JFG, Born 1902 first contact 1911  
5½ years in WWII Trustee and Faculty advisor of State  
University of New York.



#1144 DESELLIER, Charles H. W1KID, x1CRX, First contact 1920

#1145 McGLASHAN, W6GY x6PI. Born 1904, first contact 1919  
1920's Chief Engineer KFWB. Started own BC station  
KGFJ in 1926. Chairman National Communications Committee  
USF-AUX-CAP 20 years. Retired member L.A. County Sheriffs  
Aero Squadron. Member Broadcast Engineers.



#1146 LEONARD, John A. W2AWG Born 1911 first contact 1929  
Retired from Western Electric Co. Member ARRL, QCWA, AWA

#1147 WELLS, Edward D. W8EW xW8A00 W8AOX, first contact 1928  
Born 1911. Graduate of University of Mich. Law School.  
For 22 years he was Municipal Judge of East Grand Rapids.

#1148 MORRIS, David F. W3CWY born 1910, first contact 1930