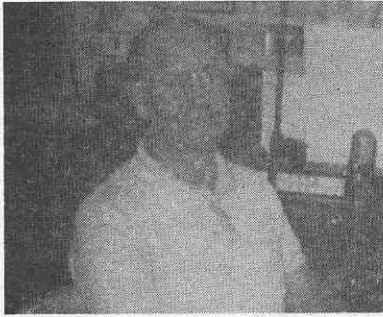




#1080 BUDWIG, G. G. K6LQ, first on air 1907, born 1895.
Started with coherer Ford Spark Coil Rotary and quench
Gaps. Homebrewed a Super Regen receiver and now using
Collins Equipment



#1081 RANHOSKY, Andrew E. W1CTN, First on air 1925 Born 1910
Built own equipment and worked first Tasmanian Station
on 40 meters in 1926. Was in Civil Defense with mobile
unit during WWII. Born 4/18/10. Holds 1st Class comm-
ercial license. Holds advance ticket and works all modes
and all bands, including SSTV. Member Kern Valley ARES
and Central Valley Radio Club.

#1082 HARTMAN, Charles M. W3GR, first on air 1924,
No information/



#1083 MARVEN, Edgar L. Sr. K4MNU, first contact 1927
Engineer and chief engineer in various BC Stations
WORC. Was instructor ESMVT radio theory lab course
at Worcester Polytechnic Institute. A few years with
Station WLRP New Albany Ind. WNAS, From 1970 City
Treasurer Devondale, Ky. Member IEEE,

#1084 TUMMONDS, Harry A. W8BAH, First on air in 1920
no information

#1085 WILLIAMS, Roger R. W6WGF, First contact 1927 x8DEQ



#1086 BOWELLE, Mark K4DE, First contact 1921 born 1904.
Started with spark gap and plodded along with develop-
ments since. Most of the time strictly traffic handling