



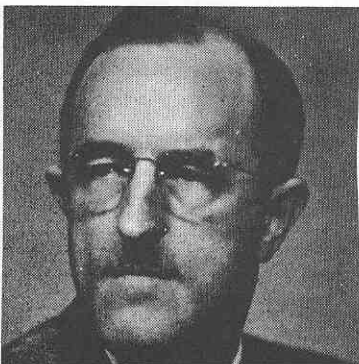
#824 SANTANGELI, Mario, ILER, handle "Mario". Born August 19, 1898. First two way contact, 1925. Occup: Engineer, Paten Attorney. Was first Italian to CC cary on two way contact with New Zealand. Worked both Argentina and Brazil in 1925. Was Radio Engineer for I.T. & T. Co. 1927-1930., and subsequently with associated companies. Member QCWA, OTC. Early rig, two fifty watt tubes in a coupled Hartley ckt, with American receiver.

#825 ROBERTS, Haydn P., Ex-HA, HB, W8HB, et al. Handle "YX". Born May 23, 1896. First two way contact, 1909. Occup: Col. USA Signal Corps, retired. 20 years with Air Corps, including Flying Radio Lab. for air to ground tests: Held commercial license in 1912. Member ARRL, AARS, IRE. Early rig, spark coil, Galena, Mother's oats box tuner, and slider.

#826 MacCRACKEN, Les, Ex-WLJFS. Handicapped member ARRL, OOTC and Red Cross.



#827 SAUNDERS, Dorothy Chapman, W4UF, Ex-2BY, W4ZKD. Handle "Dot". Born April 2, ?. First two way contact 1927. Occup: Research Biologist. Formerly University Professor. Was Fulbright post-doctoral research scholar to Egypt, and National Science Foudnation Grantee. Member ARRL, YLRL, Floridora YL's have over 200 awards and certificates earned, including DXCC on mixed and phone modes. Early rig, bread-board T.P.T.G., using 199 tube-graduating to a 210 tube. Was on 40 CW only for many years.



#828 GOODWIN, A. Jerome, Ex-WLGVJ, Ex-lBBF. Handle "Jerry". Born December 21, 1907. First two way contact, 1922. Occup: Teacher of Physics and Electronics at High School, New London, Conn. Has had 37 years in Public School Teaching and Administration. Took B.S. Dartmouth, 1928, and M.A. Columbia Univ. 1935. Member ARRL, QCWA, AF MARS, Trustee KLEXZ, Tri-City ARC, AREC, et al. His early rig: Ford spark coil fixed gap, homebuilt loose coupler, Galena, Murdock phones.