

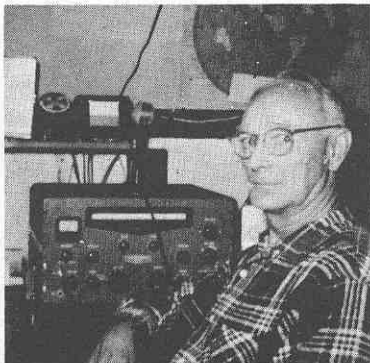


#814 PENNOCK, P.L., W8OE, Ex-8OD, W8DVA, W8PWE. Handle "Herbie". Born October 24, 1900. First two way contact 1919. Occup: Retired. Electrician early years. Managed radio stores. Associated with Crosley Radio. Later own Radio Repair Shop. Engineer with WKBN & WPDG. Installed FM stations for Police and other agencies throughout Ohio and Pa. Army in WW2, Worked with VA. Associated with Alliance Mfg. Co. for some 12 years prior to retirement. Member ARRL, Legion, QCWA. Early rig, KW Rockcrusher, rotary gap, loose coupler, audion.



#815 GALLAGHER, Edward J., WIDD, Ex1RZ, 1CZ, W1PK. Handle "Ed". With CW Sine of LA. Born August 9, 1897. First two way contact 1911. Occup: Retired in 1962 after 46 years with New England Tel. & Tel. Co. Started fiddling around with Coherers about 1911. USN 1917-1918. Married 1923 and still am to the best girl in the world. Hobbies are Brass-Pounding, Yachting, and counting grand children. Is member of the old New England Amateur Wireless Association, and South Shore Radio Club. Early rig: ½ KW Murdock rotary, with condensers oil-immersed zinc plates fliced from Marion Marconi Station with help of IZE. Rx loose coupler, xtals, then audiotrons.

#816 ROVIRA, Sidney A., W5SR, Ex-W2LNF. Handle "Buddy". Born October 21, 1910. First two way contact, 1924. Commercial Ship Operator, and Shore Operator at WNN. at Sayville and at Brentwood, L.I. Hold all top Radio Licenses. Member Westside A.R.C. Early rig, Tuner and slider, Xmtr Ford spark coil, (plus many shocks). "Am very interested in radio in all phases, and am active on the air."



#817 WILSON, Kennard D., W6DIX, Ex-OH6BWV, W3GT. Handle "KD". Born May 12, 1900. First two way contact 1926. Occup: retired USAF Operator first air-to-ground Radio (Artic Patrol) non-stop Florida to Panama Canal, call AB6 on 5550 KC 1922. 36 years in AF, both ground and air. Former member QCWA, FHC, WAS, WACC, WAZ, DXCC and 115 other awards. Early rig, Breadboard pair of UV-200's with RX a 2 tube affair with bell wire coil on oatmeal box. Had no trouble in keeping skeds with Byrd Expedition and KUP in SFC.



#818 PULLEY, Lester A., W4DH, Ex-BM, 1PY, W8AZF, W2ACT, W4LNK. Handle "Les". Born November 11, 1896. First two way contact, 1909. Occup: retired. Associated with Amrad and with General Radio in early years. Had shipboard operating in 1921. From 1921 to retirement in 1959 was with Western Electric; designed test equipment for the Nationwide Dialing and Toll Signalling. Member IEEE, ARRL, QCWA, et al. Early rig, single slide tuner, silicon detector with spark coil and fixed gap. Later had ½ KW Murdock rotary. Retired 1959 to HX-20, HR-20, then SB100 also used mobile. Also on 2 and 6 meters.