



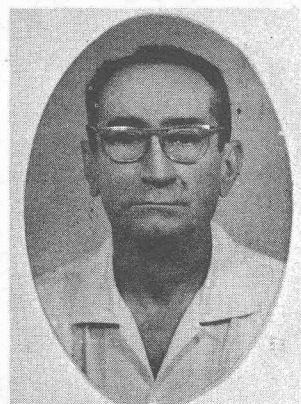
#753 MURRAY, Charles J., W8ZA, Ex-8ANZ, 8GS. Handle "Cas). Born November 24, 1896. First two way contact, October 1911. Occup. Retired Supt. of Motor Transportation, Pennsylvania Railroad Co., Philadelphia, Pa. Forty six years in the service of the P.R.R. Served in a variety of posts with the Railroad. Retiring in 1961. Early rig: Splitdorf 1 in. spark coil, slider tuning coil, electrolytic detector and Brandes phones. Moved up to Packard ½ KW Trans. with rotary gap and Helix tuner. Member of A.R.R.L., Canton, Ohio Chapter Q.C.W.A. and the Tusc. Arc. Dover, Ohio. Received a 50 year award at the October Banquet of QCWA at New York City.



#754 GIBBS, Everett H., W8AQ, Ex-1AAC, 1ZO. Handle "Ev". Born March 12, 1905. First two way contact 1916. Occup: Retired consultant on tires. Spent 40 years in Tech. Tire Manufacturing. Starting as chemist in 1925. Retired from Siberling Tire and Rubber Co. November 1965. Now part time consultant on tires with Smithers Laboratories, Akron, Ohio. Early rig: Ford spark coil and batteries, home made loose coupler and Galena detector. West to VT2 with Ford coil plate supply 1921. Member: Medina County Radio Club, ARRL, QCWA was SCM for Ohio was alternate director ARRL 1942-1944.



#755 SANNELLA, Michael J., W1LR, Ex-1MQ, W1ZX. Handle "Micke". Born March 19, 1903. First two way contact, 1915. Occup: Atty., John Hancock Mutual Life Ins. Co., Legal Counsel and Commissioner. Borad of Radio and Television Technicians, Commonwealth of Mass. Experimental Radio Station IZX. Member ARRL 1922 and QCWA. First rig Ford spark coil, two slide tuner, Murdock earphones.



#756 GRAHAM, Manuel J., XELTQ. Handle "Graham". Born September 6, 1906. First two way contact 1917. Occup. Optometrist. Early rig, 1924 I started building tube receivers with vario-couplers, etc. Made my first short wave receiver out of a radio broadcast circuit and instructions. It proved to be excellent and started copying amateurs and reporting to them. 1925 got my first transmitter consisting of two 45's in P.P. Started working U.S. and other countries on 20 and 40 meters. My first call X10A. Have had the following calls, XELBH, XELMJ.

#757 HOPPER, A. Edward, W2GT, Ex-2CJA, 2CI. Handle "Ed". Born March 8, 1906. First 2-way contact 1922. Occup: Transmitter Engineer for WHN N.Y.C. 50 KW, 1050KC. Also USA-CA Editor and Custodian for CQ Magazine. Holds Radio-telephone first. Is a DX-er who specializes in "Consideration for other Operators". Is a member of North N.J. DX, QCWA, West Guft DX, L.I. DX FOC 560, and holds many awards including DXCC, AL Opr. et al. First rig 1/2 kw rotary Sp.