

#743 RUSSELL, James L., W8BU. Handle "Jim". Born in Akron, Ohio. First two way contact 1910. Occup: Lawyer-self employed. Early rig, Ford spark coil and Galena crystal. Member of QCWA, WAC. I was farthest west station to first get a cross the Atlantic Ocean in 1921. Note: December 1921 QST and January 1922.

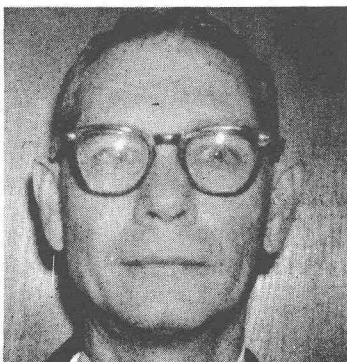
#744 LOCKNER, John Glynn, W5VQ, W2RRB. Handle "Glynn". Born September 26, 1907. First two way contact 1920. Occup: Electronic Engineer with USAF. Was associated with WSL in Utica, N.Y, in 1920, Station using Loop Modulated DeForest Xmtr. Member 843, ARRL, former President Mohawk Valley Amateur Radio Club. Early rig, Ford spark coil. Holds a Commercial ticket. Ex-8AZB.



#745 PEACOR, Carrol, W1GAG, Ex-W1AWP. Handle "Kay". Born August 10, 1903. First two way contact, February 22, 1921. Occup: Retired from Net & T. after 38 years plus of service, 1922 driving instructor and demonstrator over 2 years at Telco, before lay-off. Back with phone company in 1929. During WW2 was Radio Aid for Region 5, and then added State Director of WERS in Mass. Early rig, home made loose coupler, silicon detector, Ford spark coil, with small gap pancake Helix trans. Member President Quannapowitt Club, held all appointments in ARRL, SCM of Eastern Mass.



#746 BLAISDELL, Venson G., Ex-K1FF, Ex-1FF, W1FF, W1CKV. Handle "Vinnie". Born May 13, 1905. First two way contact 1916. Occup: Retired Print Qsl Cards as an additional hobby. Early rig, crystal detector and Oat box tuning coil trans. Ford spark coil, spark gap, wireless specialty key, ant., long wire of unknown wave length. Member ORA, Wakefield was Corps Area Net Control (Army/Amateur). S.K.



#747x-W5AQN, JOE V. WRIGHT. Ex: 5ALA. P.O.Box 1316, Rockport, Texas. 78382. Handle (Joe). Born Aug. 19, 1906. First two way contact, 1926. Occup: Pharmacist, managing Roateh Drug Store in Rockport. Taught Radio and TV in Trade School. WW2 Veteran. Active in Mars as NØTRG. Member ARRL, QCWA, Radio Clubs in San Antonio, Univ. of Texas, and Galveston. Former Member IOAR. Early rig, Single 201A in Hartley Osc., with rectified AC (unfiltered) on Plate. RX, Regen. Recvr, with one stage audio & Baldwin fones. Hold Commercial Ticket.