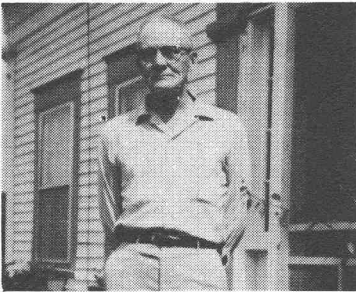


#728 POWELL, Robert H., W2AQT, Ex-W1AQT. Handle "Bob". Born May 29, 1909. First two way contact 1925. Sales Representative for Electronic Components. Early years in Steamship Business, Boston. During WW2 with Raytheon and later with Consolidated Vultee. Former holder of Commercial Telephone and Telegraph Tickets. Early rig, Cunningham CX-202 in T.G.T. P. 400 volts. Member QCWA, ARRL, AF and AM, DXCC, and various clubs starting with EMARA when it met in Gladys Hannah's cellar. Past President of Bergen County N.J. Radio Association.



#729 FOWLER, Raymond, WALEXG. Handle "Ray". Born Nov. 4, 1901. First two way contact 1919. Occup: Retired Navy Radio Operator 1919 to 1924. Member Navy Radio Pioneers, Association of Former Operators, NBD Naval Radio Station, Bar Harbour and Otter Cliffs Maine and Ellsworth Radio Club.



#730 ALBERT, Alphaeus H., W2ABF, Ex-3ABF. Handle "Al". Born January 23, 1891. First two way contact 1923. Retired Teacher of Physics and Chemistry. Was High School Faculty sponsor for number of Radio Clubs. Presently (1966) busy doing Historical Research for a book (4th) on Record of American Uniform and Historical Buttons. Does occasional rag chewing on 160 M. Early rig included a 202 (5 watt) Hartley Circuit, Ford spark coil on the plate.



#731 GEISEL, Frank. Born March 4, 1902. First 2-way contact 1919. Occup: Manager KPH San Francisco Radio R.C.A. Continuous service, all Marine Communications since Jan. 1920. Shipboard Operator until 1926. At KPH since 1926 except for WW2 1942-45. San Francisco RCA Radiomarine doing MRI work. Became KPH manager in 1942. Member Veteran Wireless Oprs. Assn., Armed Forces Electronics & Communications Association.