



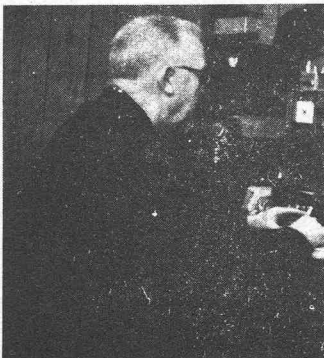
#712 DUNN, F., W8CQ, Ex-W8BBR, W8KKD. Handle "Dusty". Born March 22, 1907. First two way contact, March 1920. Occup: Owner of three camera stores in Detroit Suburbs. First station license used on sports then suspended. Early rig, Ford spark coil $\frac{1}{2}$ kw Packard spark transformer with rotary gap first CW station with 202 tube, 5 watt. Member of ARRL, QCWA, Catalpa Radio Club, Birmingham, Michigan. Work all modes of transmission.



#713 PIPER, Randolph, W1WZ. Handle "Doc". Born Dec. 19, 1906. First two way contact 1924. Occup: Physician. (General Practice). Graduate Harvard College a Physics Major, 1927, M.D. from Harvard Medical School 1931. Early rig, loose coupler and Galena crystal in 1919. Next Clapp Eastham coupler, condenser & UV200 Detector TX UV202 with home brew Helix, 500 volt PWR supply, elec. rect. Member RSGB, 1925-61, ARRL for many years. S.K. 1977.



#714 ERLER, Robert J. Sr. W6LL VALLEJO, CALIF.
HANDLE (BOB) BORN JULY 8, 1901. FIRST 2 WAY CONTACT 1915.
OCCUP: RETIRED FROM CIVCL SERVICE, MARE ISLAND NAVAL SHIP-YARD. SUPERVISOR IN THE ELECTRICAL DEPARTMENT. ALSO SERVED AS CHIEF RADIOMAN IN U.S. NAVAL RESERVE 1924-1934. MEMBER OF Q.C.W.A., WESTERN SINGLE SIDE BAND ASSN. MISSION TRAIL NET. A.R.R.L.



#715 KELL, Walter E., W8AXR. Handle "Red". Born April 28, 1902. First two way contact January 15, 1926. Occup: Clerk in Hardware Store, worked at Laurel Md. monitoring station from 1942-46. Four years a engineer at WLIO. Do a few remote pickups for the local broadcasting station WOHI. Early rig was a 171 tube in a colpitts cir. 90 volts on the plate. Then a 210-RK20 813 a ranger to present HT 37-SB200. Member Triangle Radio Club, QCWA, 1750 ARRL, Masonic Lodge. Have sung in the Presbyterian Church Choir for 35 years.