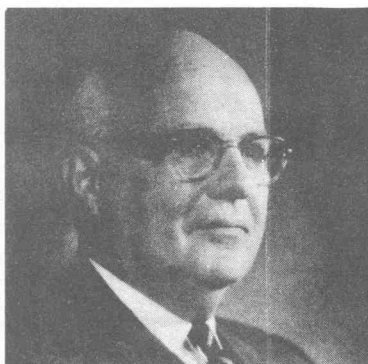




#A-699 VOORHIS, Harold V.B. Born Jan 3, 1894. First 2-way contact 1912. Occup: Analytical and Certified Gas Chemist and Assayer. Retired 1967. V.P. Macoy P.&M. Supply Co. 1946 to date. Transport duty in Navy WW1. 12 years in Naval Reserve. Red Bank High School 1912. To Cooper Union and Columbia University 1913-1916. Assistant Coordinator of Civil Aeronautics Adm. Ground School Red Bank, N.J. 1940-1941. Member of ARRL, Monmouth County Amateur Radio Assoc. AWA, RC of A. New Providence, N.J. Radio Club and many other clubs. Has presided in all York Rite Masonic Bodies and is 33° Northern Jurisdiction and author of 20 historical books on Free Masonry. Has antique collection.



#700 ZANDONINI, Elizabeth M. W3CDQ. Handle "Liz". Born Dec. 11. First 2-way contact 1922. Occup: retired to amateur operating, traveling and photography. Was associated with National Bureau of Standards 1921 to retirement. 33 years with radio section (CRPL), and from 1954 was an Administrative Aid, Radioactivity Section. Worked on original WWV, on bibliography work and kept a Section Museum. (For full career data, see SGT for April 1966.) Member QCWA, YLRL, Washington, D.C. and former IRE. First rig, VT2 5 watt Hartley. Now operates CW only, on 40 meters. On CW entire 50 years.



#701 ROACH, Isaac, K4QM, Ex-IR, W3ABI, W3AWF, WA3DDT. Handle "Ike". Born March 17, 1906. First 2-way contact 1920. Occup: Retired President Isaac Roach & Co., Insurance Brokers, Philadelphia and Newton, Penna. Former member of U.S. Naval Reserve in Radio Communications. Shipboard operator on SS Finland, Kroonland and Minnehada in 1923-24. First rig, Ford spark coil, then to 250 watt rotary spark. Off the air 1930 to 1965, then licensed as WA3DDT, later changed to W3ABI. Hold Comm. Ticket.



#702 ZUCKERMAN, Sam S., W7FT, Ex-9AGL. Handle "Doc". Born July, 1900. First 2-way contact, 1915. Occup: Physician. Served in U.S. Medical Corps WW2 retiring as Captain in 1962. Currently (1966) practicing Pathology in Cheyenne, summers and wintering in the south (with radio). Work all bands, mostly CW. Member Colorado Wireless Assoc. in 1915. Early rig, 1/2 kw homemade Xtmr. glass plate cond. rotary gap, Xtal detector, loose coupler.