



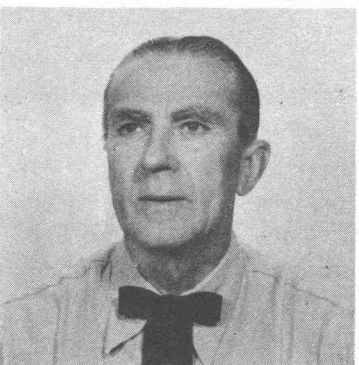
#655 GEOHEGAN, William A., Ex-WA2LHP. Ex-8AGI. Handle "Bill". Born Nov. 1, 1907. First two-way contact 1922. Occup: Physician. Was a member of ARRL, OTC, QCWA, RCC, et al. S.K. 1965.



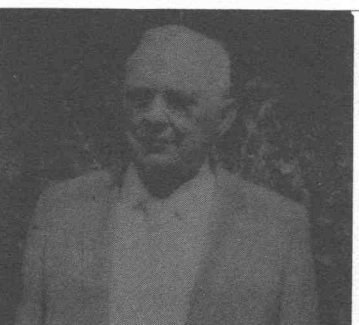
#656 ST. VRAIN, Wallace E., WØPXE, Ex-9BRU. Handle "Barney". Born January 15, 1905. First two way contact August 27, 1923. Occup: Electronics Engineer. Have worked as Airline Radio Technician, Broadcast Engineer at KMOX, WIL, KXLW. Presently Engineer for Mosley Electronics Inc. Early rig, Ford spark coil, crystal detector, used UV202 and two tube regen receiver later. Member IEEE.



#657 WELLS, Samuel L., W6JJ, Ex-2GE, NU2GE, W2ADH. Handle "Lloyd". Born July 7, 1903. First two way contact 1924. Occup: Supervisor, A.T. & T. Co., Overseas Radiotelephone, Pacific Area. With Telco 44 years (1967). Started listening on Ham Waves in 1915. Early years with Bell Tel. N.Y. and N.J. and at A.T.&T. Long Lines. Was Radio Officer, USN, Carrier CVE-31, in WW2, 1942-45. Member ARRL. Early rig, Grebe CR receiver Xmtr; DeForest Type "H" Tube.



#658 REID, Robert H., W4TK. Handle "Cuhn'l Bob". Born Jan. 29, 1909. First two way contact 1925. Occup: TV Engineer WJXT, Jacksonville. Earlier engineer and morse operator with A.T. & T. Co., then engineer with WJAX and Chief at WTAL, Tallahassee. Hold commercial ticket knew Reinartz and still has one of the original Reinartz tuners. Has QSL card from WNP Artic Expedition to North Pole on the Schooner Bowdoin in 1927. Member ARRL, QCWA, WAS. Has 1 kw on 80-10 Meters, AM, CW and SSB. On air almost daily since 1925. First rig, UV202 5 watter, Hartley.



#659 DuTREIL, L., J., N., W5DU, Ex-MQ, W5XAO, W5ZI. Handle "Joe". Born August 8, 1891. First two way contact 1907. Occup: Consultating Radio Engineer. Member IEEE and Greater New Orleans Radio Club. Listed in Popular Electrics Wireless Amateur List of members 1911. Hold Commercial tickets. Early rig, spark coil.