

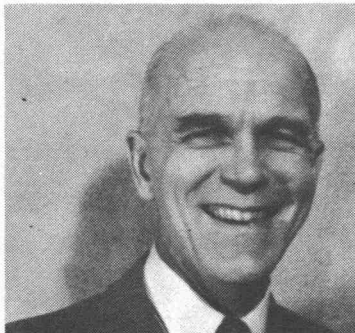
#615 WALSH, Fred J., WALAXF, ExLEAK, LAEK, LABE. Handle "Ted". Born August 24, 1905. First two way contact 1919. Occup: Printer on the Boston Herald Traveler. Early rig, Ford spark coil with slide tuner and silicon detector. Later in 1923 used 250 watt transformer with open gap and RCA double filament detector, with Navy type coupler.



#616 ALBERTSON, Fred W., W4BD. Handle "Fred". Born Sept. 29, 1908. First two-way contact 1920. Former BC and Telegraph operator. Member of Bar in Michigan and D.C. Professional Electrical-Communications Engineer, Semi-retired as Senior partner after 40 years of law practice with private firm.



#617 WAITE, Amory H., W2ZK, Ex-1JW, W1TR. Handle "Bud". Born Feb. 14, 1902. First two-way contact 1912. Occup: Electronic Engineer and Co-ordinator U.S. Army's Electronics Command Artic and Antarctic Research Teams. Early rig, spark coil and Galena and Silicon crystals, then rotary gap and 1/4 kw homemade trans. 3 wire flat top. Member SSBRA, ARRL, QCWA, WAC, Senior IRE, VWOA. One of three rescuers of Byrd at Little America 1934. Eleven Antarctic and 12 Arctic Expeditions as coordinator of U.S. Army CMDS Antarctic antenna research teams 1946-1965. Originated ice depth sounding now used by nine nations and holder VWCA, Marconi Gold Medal, Special Congressional Bronze Star.



#618 LONGLEY, John F., W2ANB. Handle "John". Born Feb. 14, 1909. First two-way contact Feb. 1925. Occup: Retired from N.Y. Telephone Co. in 1964. Was in plant and eng. depts., except 2 years with Bell Labs. and 5 years in Army and Air Force. Started in Signal Corps, E.T.G. in England, now Lt. Col. in A.F.R. XYL is W2ZPR. Early rig, Hartley one tube trans. using VT2 and Electrolytic Rectifier. Member Bloomfield Radio Club, MIT Radio Club, Associated Radio Operators, Schenectady Amateur Club, SR. of IEEE.



#619 ANDRES, Charles, Ex-W5NI, 5GK, 5NE, W5NE. Handle "Chas". Born Oct. 20, 1900. First two-way contact 1919. Occup: Retired. Shake-down Radio Operator on PBY. Consolidated Aircraft Co., also Control Tower Operator when build first B.C. station in New Orleans, WGV, was first announcer and operator. Early rig, 1/2 kw spark.