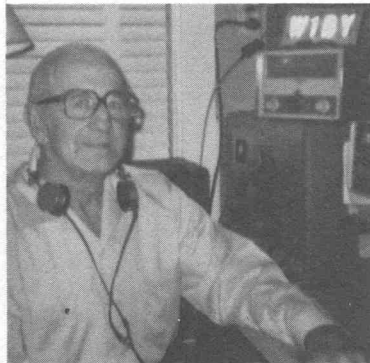




#605 PRATT, Roy W., W5UCW, Ex-WØBAL, 9BAL. Handle "Roy". Born March 10, 1908. First 2-way contact September 15, 1921. Occup: Chief Engineer who broadcasting company AM-FM-TV. Worked as Radio Operator on the Great Lakes during summer vacations, 1927-28. First employed in radio industry as operator in broadcast station in the Fall of 1928 while in college. Early rig, Meteor $\frac{1}{2}$ kw transformer, oil immersed condenser, Murdock gap and O.T. aerial 75' long, 45' high, 4 wire receiver regn. and 1 stage audio. Member ARRL since 1922, Charter Member Des Moines Amateur Radio Assn. and Society of Broadcast Engrs. Also member of Radio Pioneers. S.K. 1976.



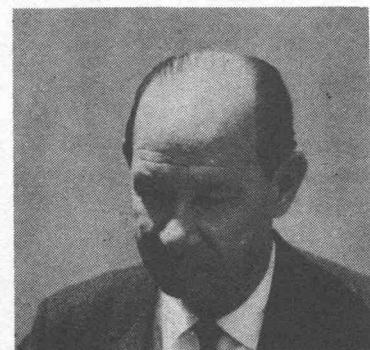
#606 HUSTON, Robert D., WLEM, Ex-1ASB, 1EK, W1HGX. Handle "Bob". Born September 12, 1901. First two way contact Jan. 15, 1917. Occup: Plant Staff New-England Tel. & Tel. Co. with the above since 1924, as toll testroom supervisor, transmission engineer and plant staff. Early rig, $\frac{1}{2}$ kw Thordarson with a home brew rotary gap, then to an Amarad quenched gap. Member ARRL since early 20's, Portland Wireless Association. Operate CW on 20 and 40. SK



#607 RASTIKIS, Alfred, W1BY. Handle "Al". Born Feb. 6, 1906. First two way contact February 24, 1924. Occup: Maintenance in plumbing shop. Previously in Poultry raising. Early rig, ICW using Ford spark coils, and UV201A also spark gap ant. inverted two wire ell, crystal receiver with loose coupler. Member The Massasoit Radio Assn., Edison Award, ARRL.



#608 BORTON, Fred W., Ex-W4ZF. Handle "Fred". Born Sept. 20, 1889. First 2-way contact February 1924. Occup: Retired. Have been connected with Radio business since it's inception, built broadcasting station WQAM 1920, operated it until 1948 when it was sold. Early rig, the regular bread board type. Member ARRL, Broadcast Pioneers. S.K.



#609 RASMUSSEN, Erwin A., W6YPM, Ex-9BCH, 9AMS, W9FAV. Handle "Erv". Born Jan. 3, 1903. First 2-way contact spring 1917. Occup: Retired. My whole life has been in the paint business. retired in 1962 because of heart disability. Early rig, Ford spark coil crystal detector, then $\frac{1}{4}$ kw spark Thordarson. Member Milwaukee Radio Amateur Club, Fox River Valley Radio Club, Santa Clara Amateur Radio Club, Founder of Northern California Chapter QCWA and Member of the Rangers.