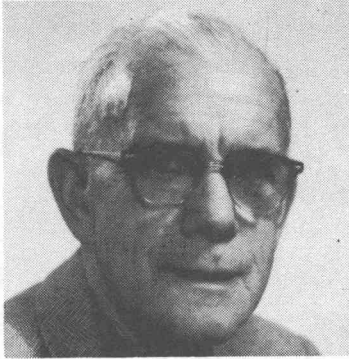
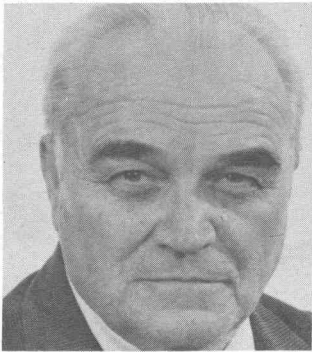




#595 LINVILLE, Lawrence S., W7DH, Ex-7DG. Handle "Larry". Born March 3, 1909. First 2-way contact May 7, 1925. Occup: Jobber Salesman (Wholesale Hardware). Early rig, UV202 5 watter Hartley circuit, wound own power trans. later rig was UV203 and UV204 tubes, Cage antenna and counterpoise. Member of ARRL, QCWA, OTC have WAS, WAC, DXCC, RCC, and quite a few other awards.



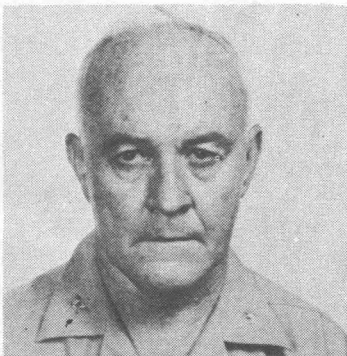
#596 CAPEN, Chester M., Ex-W1AGR. Handle "Chet". Born April 23, 1892. First two way contact 1909. Occup: retired Engineer, during WW2 served as an engineer in the USS Signal Corps and as Communication Liaison Officer with the Mass. State Staff, Adj. Office, after the was was Associated with Dr. Greenleaf W. Pickard, W1FUR, as a Field Engineer and Consultant, retired in 1957, interested in the design and construction of Radio gear as well as operating. Early rig, Ford spark coil home made spark gap, condenser, Helix and home made key. Have been a member of most of the local and Boston Radio Clubs and the Engineers Club of Boston and the Wireless Club of America, only affiliate now is the Norfolk County Radio Association, I am a life member.



#597 TAGGART, Samuel E., W2IU, Ex-W9NH, W9ENH, 2IJA/3, W1ZA, 8DBM. Handle "Sam". Born October 14, 1905. First 2-way contact December 1923. Occup: Electronic Engineer Federal Aviation Agency, (Formerly CAA) Elec. Eng. Westinghouse E & M Co. 30 years with CAA/FAA. Early rig, the old single circuit with key in ground lead, Ford spark coil, then UV202 in a 1 DH circuit. Member RCC, ROWH, BPL, ORS, OPS, ARRL, IRE, QCWA, OTC, Hoosier Radio Club and SCARA. SK



#598 CORCHENE, Homer B., W9DQ. Handle "Homer". Born Oct. 25, 1899. First two way contact 1915. Occup: retired 1917-18 U.S. Navy Great Lakes Dunwoody Insti. and Harvard Radio School 1919-22, Merchant Service Marconi Co., Independent Wireles Tele. Co., and Ship Owners Radio Service, 1923-24, Instructor Chicago Tele. Inst. 1924-64, Chief Transmitter Engineer, WLS Radio Station, Chicago, Ill. Early rig, purchased in 1915 from Electro Importing Co., of N.Y.. Senior Member IRE and former of Veterans Wireless Operators Assn., Member of ARRL, URITA, ATE, NABET.



#599 LEIGH, Philip F., Capt., Ex-K6VF, WB6PLS, Ex-6VF. Handle "GH". on C.W., born October 9, 1900. First two way contact 1916. Occup: retired from U.S. Navy 1961, rank Captain, 1916 Postal Tel. Co. Night Operator to 1917, Radio Operator U.S. Naval Res. Aug. 1917-19, and on up to U.S. Navy 1940 to 1961. Early rig, rotary gap 1 kw Thordarson, glass plate cond. sloping 4 wire ant. home built loose coupler, Galena silicon and iron pyrites crystal detector, copper tube Helix, unable to operate after 9 pm due to neighbors complaints about spark. Member of U.S. Naval Reserve 1932 to 1940. S.K.