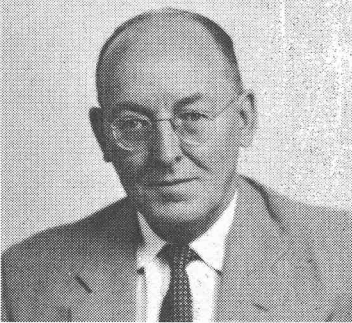




#492 HOLLAND, Edwin C., K1RTV, Ex-1CBJ, W1KLX. Handle "Ed". Born December 14, 1904. First two way contact, 1921. Occup: Bank Treasurer, first receiver 1919. Ham until 1926 when I went Brass Pounding with RCA, then in 1927 went with TRT. until 1934. Back to Ham Radio again about 1936. until war broke out. Gave up for good until the bug bit again. Early rig, loose coupler, one inch spark coil with straight gap.



#493 FELLOW, Floyd, WA4CLG, Ex-WB2KOQ, W8KOQ. Handle "Floyd". Born May 27, 1907. First 2-way contact, 1921. Occup: Electrical Engineer, Consulting Engineer for over 18 years, now with Manufacturer of Kiln and Grinding Mill Equipment. Early rig, Ford spark coil, and rotary gap, loose coupler, Galena detector. Member Sunrise Radio Club, belonged to High School Radio Club some years ago.

#494 MCINTOSH, Harold W., Ex-W1CS, Ex-1CX, W1DMP. Handle "Mac". Born June 20, 1897. First two way contact 1914. Occup: Retired during the 1930's was active member of AARS and served as Control Station for Conn. Early rig, tuner wound on cardboard tube 2 slide silicon detector, trans. Ford spark coil, next Thordarson kw transformer, with rotary gap condenser, foil and window glass, copper coil tuner, also had a national SW3 receiver during 1930's.



#495 PARKER, Clifton, G., W1KJG, K1TJJ, Ex-1CBT. Handle "Park". Born October 2, 1906. First two way contact 1921. Occup: Attorney at Law. Presently in private practice. Early rig home made close coupled tuner, silicon detector, Ford spark coil, then Forest audion panel, Thordarson 1/4 kw spark Murdock coupler. Member Lamoyille Valley Net 1935, Hardwick Academy Radio Club, 1921-25, QRRL, QCWA, Burlington Franklin County and Central Vermont Amateur Radio Clubs.