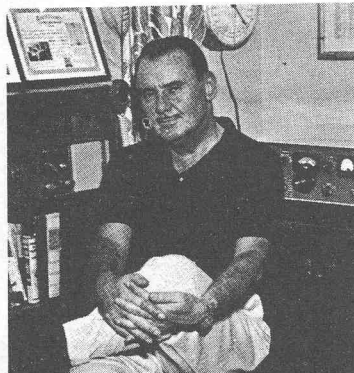




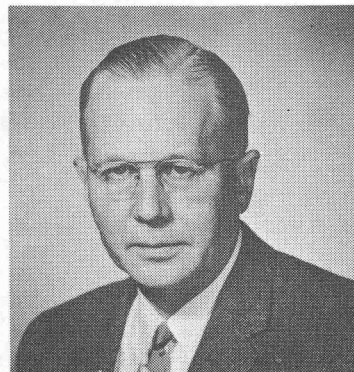
#408 BRICHTA, Edward C., W6RSY, Ex-8BVB, 8AZD, W3BBE, W4BNX. Handle "Ed". Born Oct. 17, 1905. First 2-way March 15, 1923. Occup: A Tech Research, Lockheed Missile and Space Corp., Sunnyvale, Calif. 2½ years CASS Tech. High, Detroit. Enlisted U.S. C.G. 1926. With last 15 years in aviation early rig home brew regn. receiver with H.C. coils. Home brew transformer with SGL UV202 antenna 4-wire flat top inverted L Member ARRL.



#409 MARCY, Alfred F., Ex-W4ID, Ex-8BUM, 8NQ, 8XBE, 8AQ, 2DK, W8IC. Handle "Al". Born July 21, 1900. First 2-way contact 1921. Occup: Manager Shops Quality Control RCA Co. at the Missile Test Project, Patrick AFB, Florida. Early rig, two slide tuner with silicon detector, and Mesco spark coil. Member Syracuse Radio Club, Missile Amateur Radio Club. (Both now defunct), Assoc. IRE.



#410 HEBERLE, Clement K. M.D., W40IQ, Ex-1AZD, 1CBD, W1MDB. Handle "Clem/Doc". Born Jan. 20, 1905. First 2-way contact August 1919. Occup: Physician and Surgeon, General practice of medicine and surgery since 1932. Opened up the first radio store in Gloucester, Mass. and put myself through medical school by teaching code at Chicago Telegraph Institute. Earl rig. Ford spark coil, Helix then to a 1 kw coffin, rotary gap. Member Gloucester YMCA Radio Club, ARRL Daytona Beach Radio Club.



#411 MARSH, John S., Ex-W3ZF, Ex-3ADX, 3ZE. Handle "John". Born March 30, 1905. First 2-way contact September 17, 1920. Occup: Technical consultant, Bethlehem Steel Co. Wrote articles and books on metallurgical and thermodynamics subjects: Manager of Research until Jan. 1, 1963. Early rig, was three we "E" tubes in LDH circuit. Member QCWA.